

# Configuring and Using UltraEdit for Linux with WPS

*September 28, 2010*



**MineQuest, LLC**

*An Authorized WPS Reseller*

1939 Queensbridge Dr.  
Columbus, OH 43234

[www.MineQuest.com](http://www.MineQuest.com)  
Tel: (614) 457-3714

### Introduction

WPS from World Programming Limited is a SAS language interpreter available on a number of platforms including Windows, Linux, Mac OS X, Solaris, AIX, z/OS and z/Linux. Currently WPS on Linux does not come with a GUI. This document shows how you can use UltraEdit for Linux (UEX) to edit and submit WPS programs. With UEX, not only can you edit and submit your WPS programs, but you can view the log and list files created by WPS as well.

One of the most useful features of UEX when used with WPS is that even with open log and lst files, UEX will update the open files when you click on them to view the contents. As a matter of fact, clicking on a running log file will allow you to see at what point your program has progressed.

This document will show you how you can install the UEX SAS Language word file for syntax highlighting as well how to setup the UEX application for WPS job submission.

### Requirements

- UltraEdit for Linux
- WPS for Linux
- SAS.uex word file

Note that this guide is only applicable when using WPS with UEX for Ubuntu, Fedora, OpenSUSE, or the Centos/RedHat distributions from IDM.

UltraEdit for Linux is available directly from [IDM Computer Solutions](#). IDM provides a 30 day trial for UEX that you can use to evaluate the functionality of the editor.

WPS for Linux is available for U.S. and Canadian organizations from [MineQuest, LLC](#). MineQuest is an Authorized Reseller of WPS and will provide you with a 30 day evaluation trial of WPS if your organization does not currently license WPS.

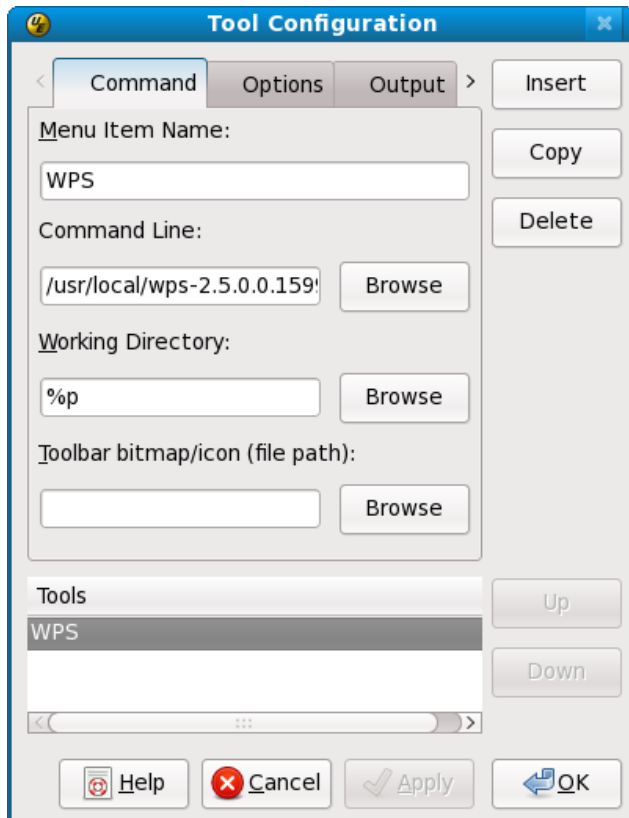
### Configuration

This manual assumes that you have already installed WPS and UEX on your computer. If you have not already installed these two applications, do so before running through this configuration guide.

## Create a Submit Tool

From the main menu, click **Tools || Tool Configuration**

On the **Tool Configuration** dialog box, select the **Command Tab**.



Click **Insert** for the Tool Name

**Menu Item Name:** WPS

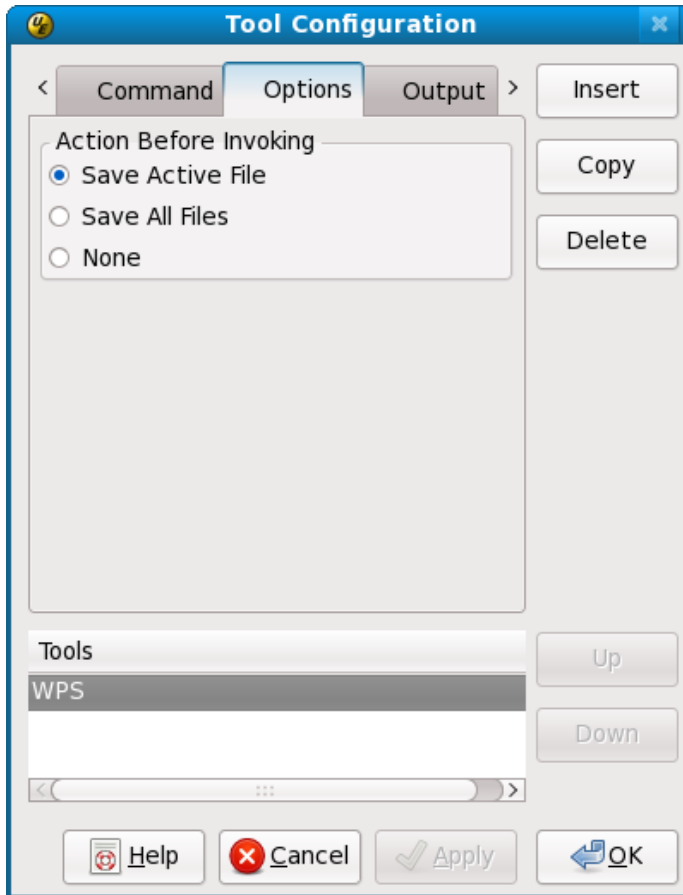
**Command Line:** /usr/local/wps-2.5.0.0.15992-maintenance/./wps %f

For this example, /usr/local/wps-2.5.0.0.15992-maintenance is the location where WPS was installed.

**Working Directory:** %p

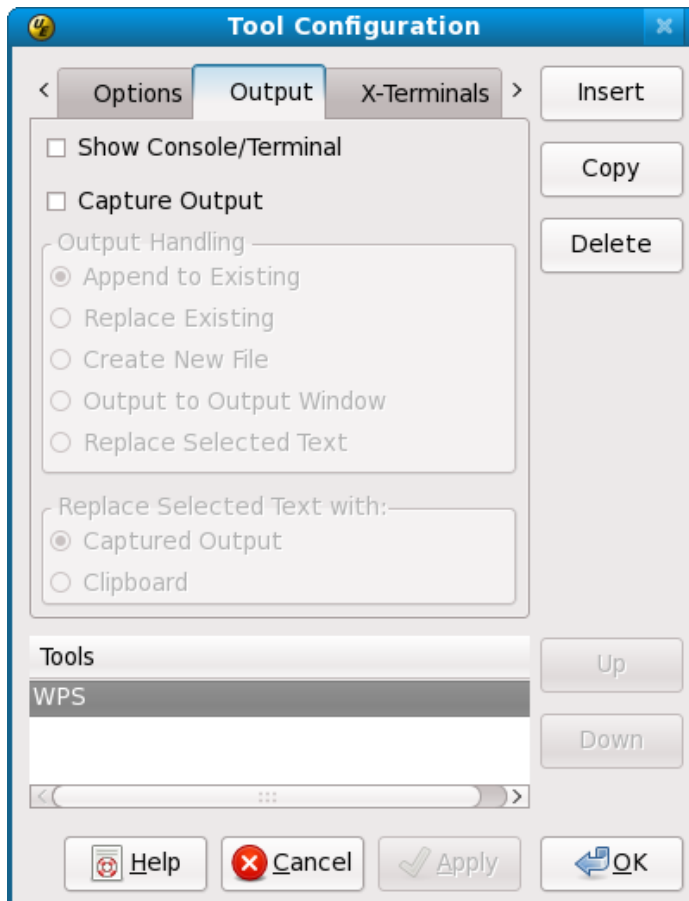
**Toolbar bitmap/icon (file path):** Leave empty

Click on the Options Tab



The only option for **Action Before Invoking** that should be checked is **Save Active File**. Although this is a personal decision, we recommend that you use **Save Active File** which is illustrated in this guide.

Click on the Output Tab.



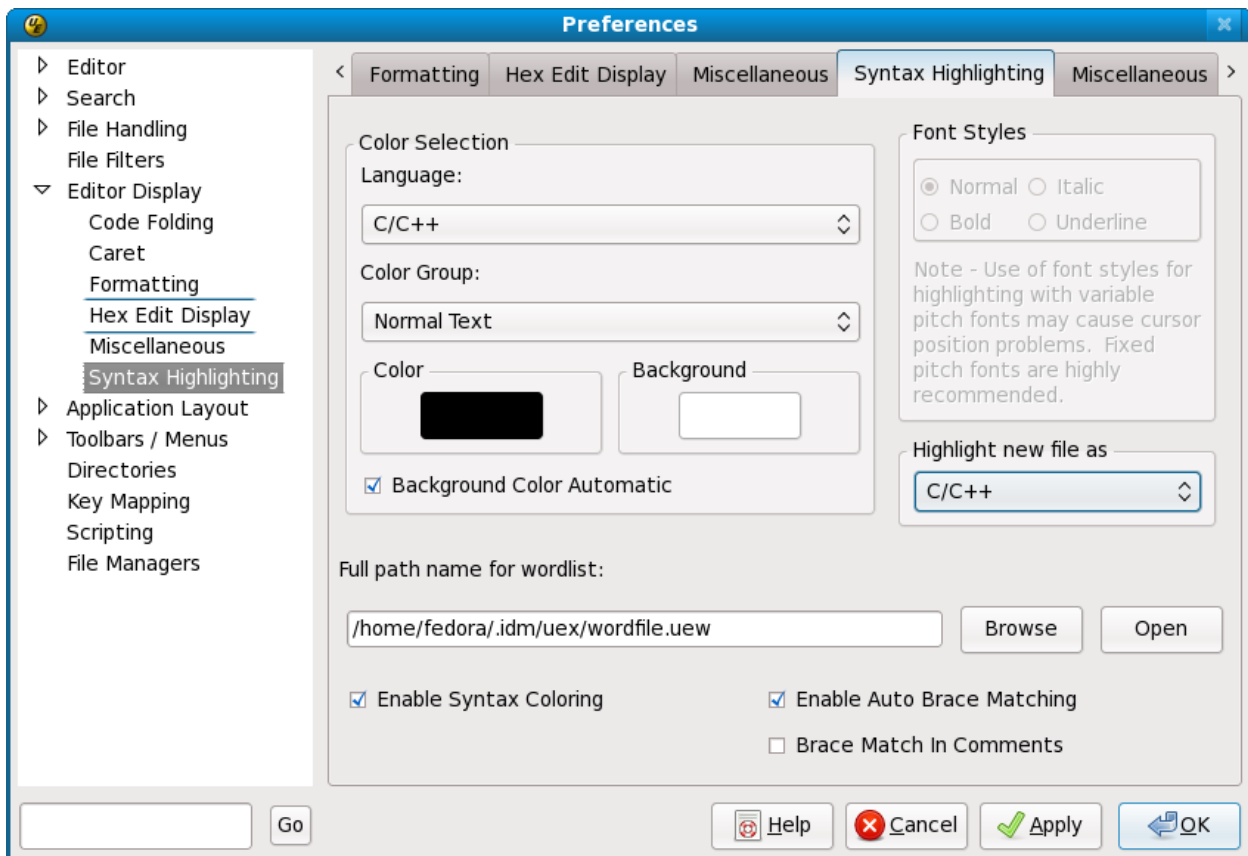
Make sure that **Replace Selected Text** and **Output Handling** are grayed out. Also make sure that **Show Console/Terminal** and **Capture Output** are also unchecked.

## Install Syntax Highlighting

**Step 1.** Open the default word file.

Open the UEX default word file by going to the main menu and clicking

**Edit | Preferences | Editor Display | Syntax Highlighting** and click **Open**.



**Step 2.** Open the SAS syntax highlighting word file.

Go to the [UltraEdit word file page](#) and download the SAS file. The UltraEdit word file page can be found at: <http://www.ultraedit.com/downloads/extras.html>. You can also open the SAS syntax highlighting word file directly in your browser by clicking [here](#) or by going to: <http://www.ultraedit.com/files/wf/sas.uew>

**Step 3.** Paste the new word file.

Go back to the default word file, which was already opened in UltraEdit, and Paste the contents of the clipboard (the SAS Syntax word file) to the end of the default word file.

Please make sure that the word file you just pasted to the default word file does not have a duplicate language number.

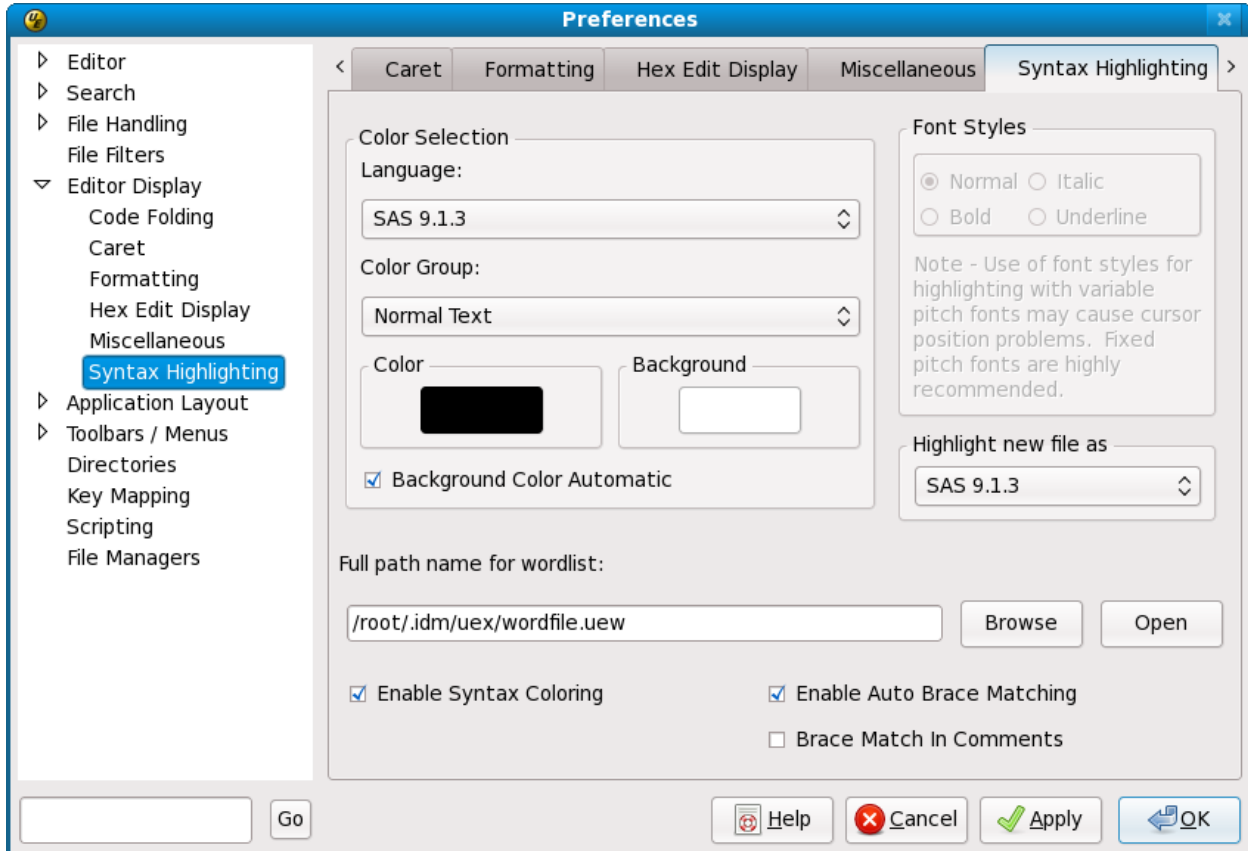
The language is specified by a /Ln where n has a value of 1 to 20. This is at the beginning of the line. As of this writing, the SAS.UEX file has a value of 14. You should not have to modify this value.

**Step 4.** Save the word file.

Save the file using File | Save, or CTRL + S

**Step 5. Set Default Highlighting.**

Go to **Edit | Preferences | Syntax Highlighting**



Under Color Selection / Language: Select **SAS 9.1.3**

Highlight new file as: **SAS 9.1.3**

Enable Syntax Coloring - checked

Enable Auto Brace Matching - checked

**Apply | OK**



Go back to the main menu and click **View | View As (Highlighting File Type)**

A selection list of languages will appear and make sure **SAS 9.1.3** is checked.

### Configuring a Submit Button

You can configure UEX buttons to submit your WPS code for execution with a single click.

From any of the toolbars at the top, right mouse click and then select Show All. You should see a toolbar called User Tools. This toolbar will have a little hammer as the icon.

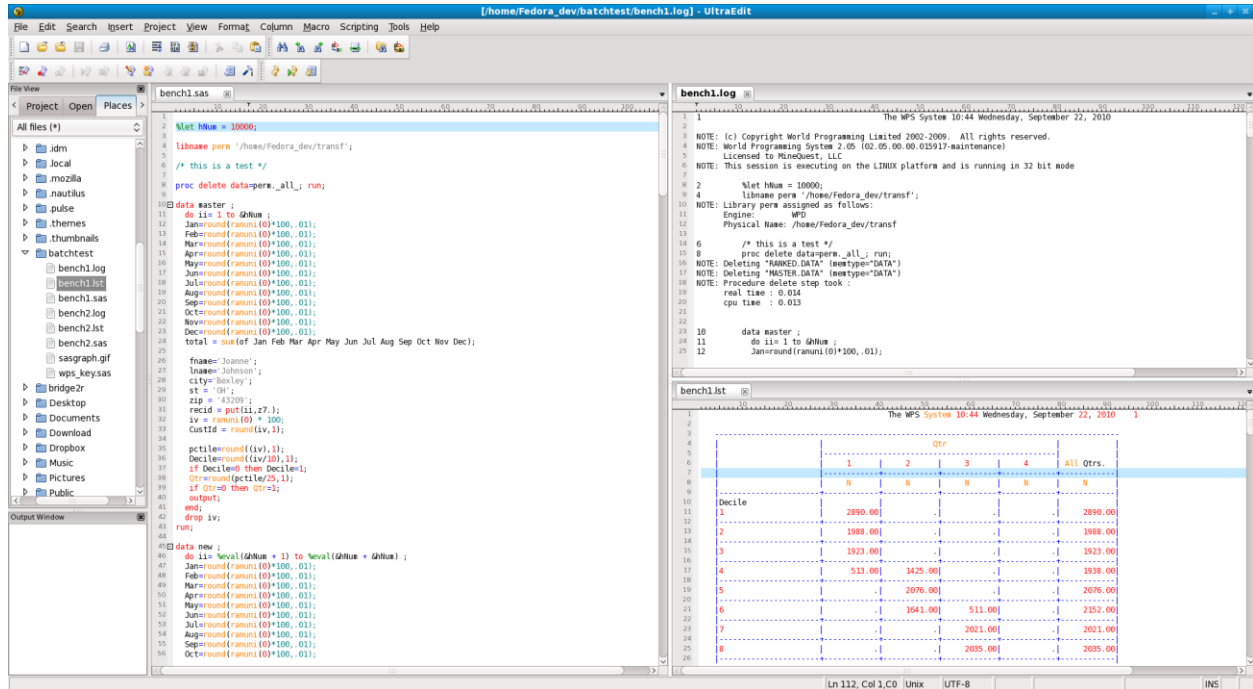


You can move this toolbar around to a more favorable position if you wish. With an open WPS program, simply click on the icon and your program will be submitted to WPS execute.

After your program finishes execution, you can refresh the folder list on the left hand side and your log and list file, if applicable, will appear. By clicking on the newly created log and list file, you can view these file in UEX as well.

## Tips

**Multiple Windows** - UEX uses a tabbed window metaphor where you click on a tab and open the window of choice. However, you can view and work with multiple windows. Simply go to a tab and drag it to the far right side (or bottom) of the application and UEX will place the window in an open state at that location.



The above figure shows bench1.sas open on the left side of the application and bench1.log on the upper right hand side and bench1.lst open on the lower right hand side.

**Determining when a WPS program has completed** - You can determine when a WPS program has completed two ways. The first way is to monitor the output window. When you submit a WPS job, a PID is created. That PID is displayed in the output window (*lower left hand window in the figure above*) after the program completes with text similar to:

Tool [ 3214] Process terminated

You can also click on the log file and look to see if the job has terminated. UEX will ask you if you want to refresh the file to see the latest addition to the log.

## Copyright

Configuring UltraEdit for Linux with WPS is Copyright (c) 2010 by MineQuest, LLC. 1939 Queensbridge Drive, Columbus, OH 43235. USA.

## Acknowledgements

MineQuest, LLC is a registered corporation that specializes in WPS and SAS Software development and consulting. MineQuest is an authorized reseller of WPS in the U.S. and Canada.

Web: <http://www.minequest.com>

World Programming Company. World Programming Company develops and sells WPS, a SAS/Base alternative that runs on Windows, Linux, Unix and z/OS. Web: <http://www.teamwpc.co.uk/home>

SAS is a registered trademark of SAS Institute Inc.

IDM Computer Solutions, Inc. develops and sells UltraEdit for Windows and UltraEdit for Linux.

Web: [www.ultraedit.com](http://www.ultraedit.com)